



A collage of 14 photographs arranged in two rows of seven. The top row shows: 1) A worker in a white hard hat and dark shirt operating a large piece of machinery with a rotating drum. 2) A worker in an orange safety shirt and white hard hat. 3) A dirt road winding through a green, hilly landscape. 4) A large, dark, rectangular structure, possibly a bridge component, being moved or installed. 5) A worker in a white protective suit and mask. 6) A group of workers in safety gear standing in a line. 7) A worker in a hard hat and safety vest operating a piece of machinery. The bottom row shows: 1) Two workers in orange safety shirts and white hard hats standing in a field. 2) A worker in a white protective suit and mask. 3) A large, dark, rectangular structure being moved or installed. 4) A worker in a hard hat and safety vest. 5) Three workers in hard hats and safety vests standing together. 6) A large industrial facility with multiple tall chimneys or towers. 7) A large, dark, rectangular structure being moved or installed.

Health, Safety, Environment & Community

- This interactive and practical workshop will train those in leadership positions to effectively, manage, delegate, respond, influence, inspire, and strengthen safety culture and morale.
- This workshop will help you develop your overall leadership ability and skills, ensuring you are a strong leader and are able to respond to the requirements of the personnel under your control.

2.00 Introduction
2.10 What is leadership
2.15 Rescue Leader
2.45 Defining Leadership
3.15 Break
3.45 Effective communication
3.30 Effective leadership
4.10 Using and implementing leadership
4.40 Review leadership
4.50 Areas for improvement
5.00 End of workshop



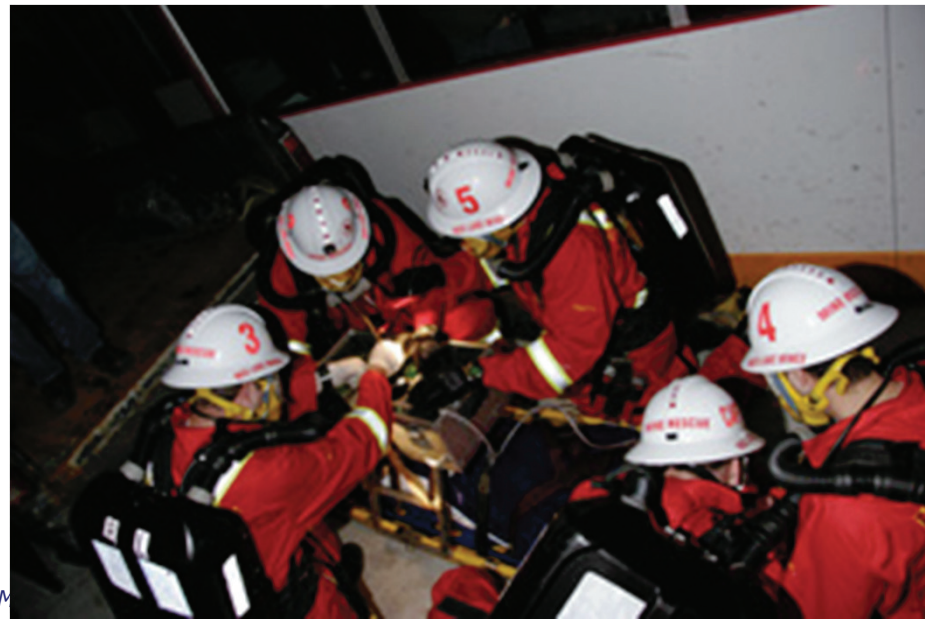
Rescue and leadership

'...the difference between ordinary and extraordinary is that little bit extra'



What is leadership - 'General wisdom'

What is an emergency - an event, or set of events, which disrupts our normal day to day routine



2011, http://www.goldcorp.com/corporate_responsibility/health_safety/

In an emergency or training situation the rescue team captain is responsible for the following:

- a) the discipline and general safety of the team.
- b) allocate the checking of team equipment and breathing apparatus duties to team members prior to use.
- c) that the team's assigned task is carried out in a safe and efficient manner in accordance with standard operation
- d) procedure/sound rescue practice and within the designated time.

What makes an effective leader

- Analytical Skill
- Overcome elementary responses
- View efforts as a function of goals
- Know how to work as a team
- Ethical coherence and integrity
- Communication
- Inspire the best from their team
- Have followers, not subordinates



- Information
- Evaluation
- Linkages
- Order
- Key posts



Dragons at the Southern **Mines Rescue** Station near Wollongong. dailytelegraph.com.au

- Someone who is followed willingly
- Define tasks and roles
- Provide guidance and direction towards goals
- Sets standards
- Rewards
- Mentors
- Shares team success
- Group benefit



- Not to participate in physical work
- Team Building
- Set standards
- Motivation
- Training
- Mentoring
- Feedback
- Rewards



- Analysis
- Mentoring/Coaching
- Benchmarking
- Review team or review leader
- Goal outcomes
- Review from failure, rather than success
- Leadership skills vs team skills



Areas for Improvement

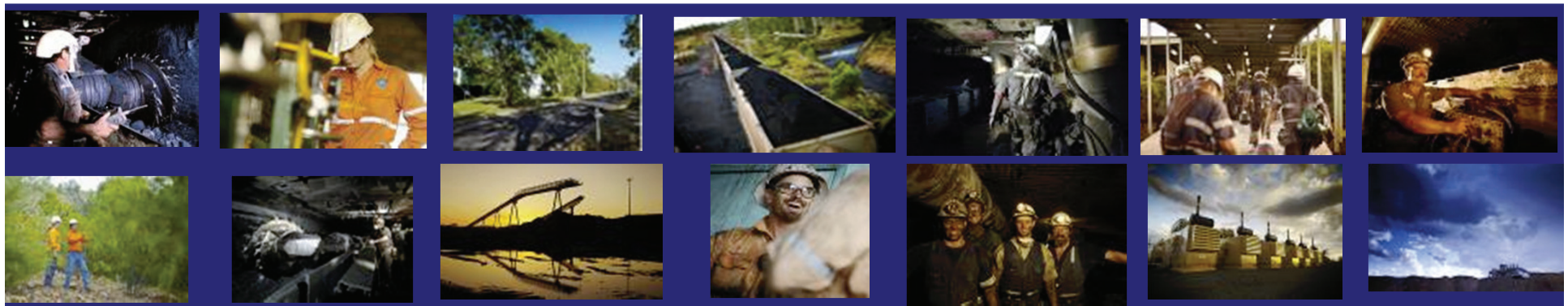
- Gap analysis of leadership
- Review from success, rather than failure
- Scenario analysis
- Benchmarking
- Competition
- Mentoring leaders





Workshop D: Mine Rescue Leadership Training

Allison Golsby



Health, Safety, Environment & Community